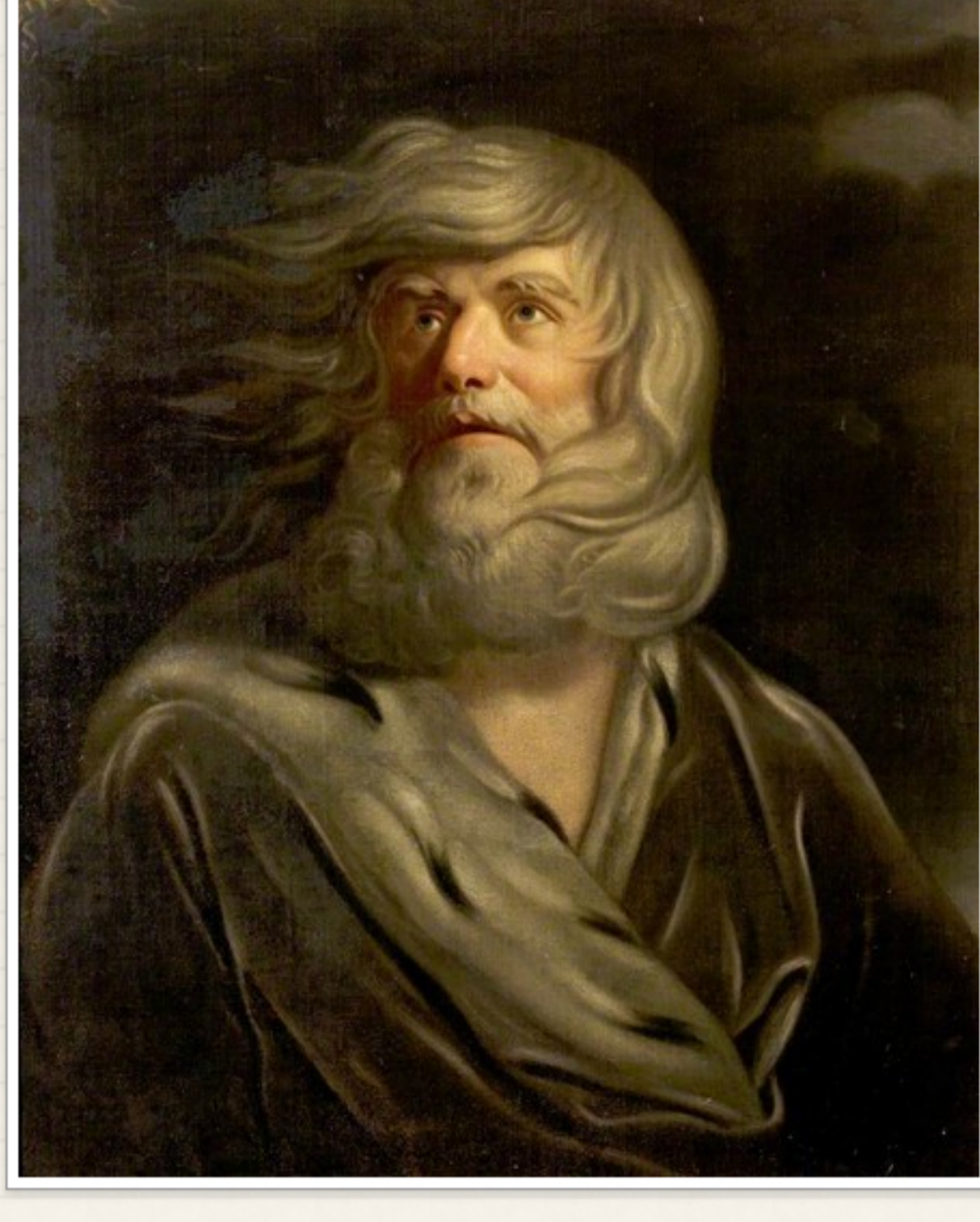


Anger's Smoke & Fools' Fire

ERASCIBLE SAM & FOLLY CLUB



Samuel + Erasmus institute

ideas • conversation • friendship

A MEETING OF THE ERASCIBLE SAM & FOLLY CLUB (HOUSTONIA)

Kind folk of the most gently refined rough Erascible Sam & Folly Club...(ahem): our next *full (and festive)* meeting is on the Tuesday before Thanksgiving, November 22!

It will take place at our old quarters on Milford Street and will include dinner, games, and an autumn engagement with Mr. Shakespeare. We shall dramatically read and discuss his brilliant work, *King Lear*.



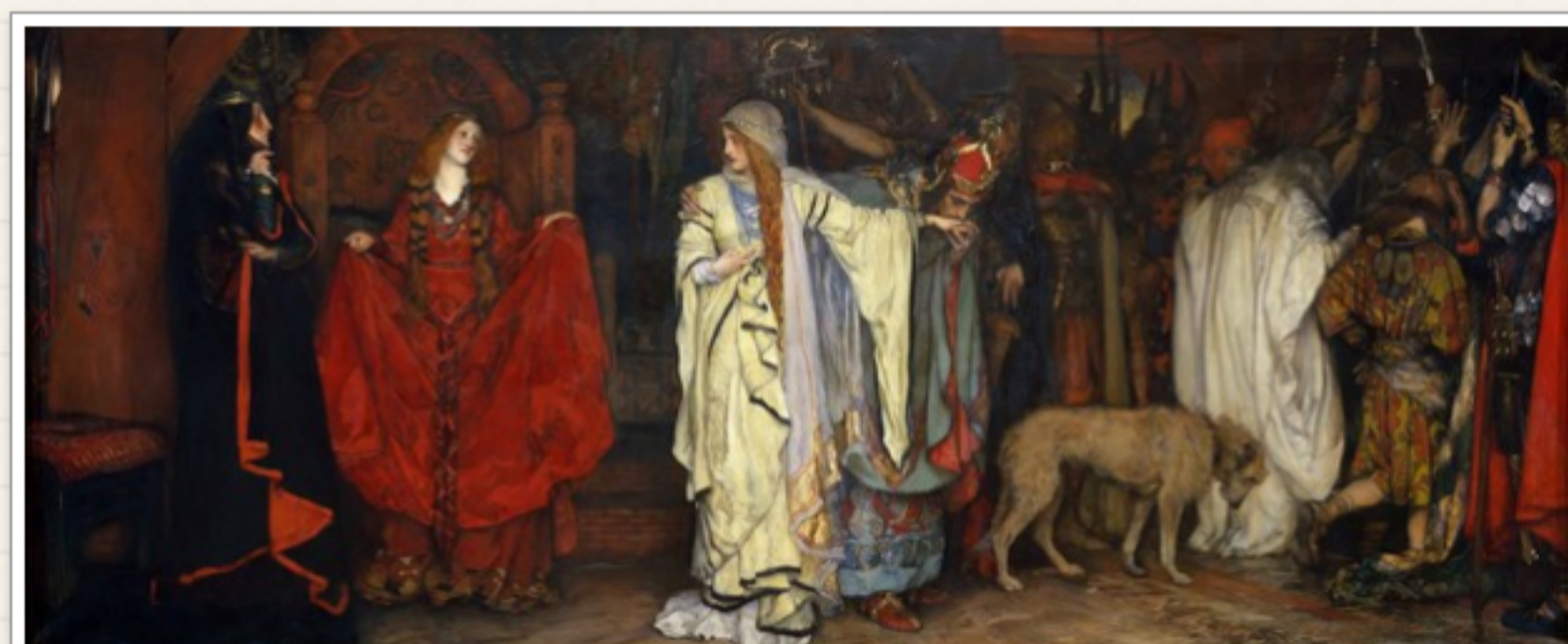
This limited event is also open to college students. Please RSVP (asap).

Until then!

Mr Presberg

"NOTHING CAN COME FROM NOTHING, SPEAK AGAIN."

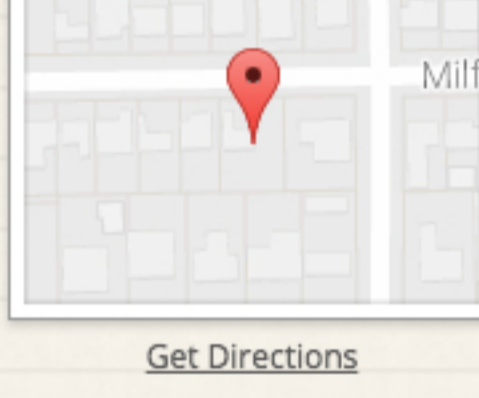
~ King Lear to Cordelia



ANGER'S SMOKE & FOOLS' FIRE

WHEN
TUESDAY, NOV. 22ND, 4:15-9:30PM

WHERE
1707 MILFORD STREET
HOUSTON, TX



[Get Directions](#)

A PLAN

4:15 Gather, games
5:15 Intro, *King Lear* (Part 1)
6:30 Dinner and discussion
7:00 *King Lear* (Part 2) followed by discussion and spontaneities including music, etc.
9:30 Adieu (Go Home!)

Cost: \$15

Attire: Sport coat or vest and pants (jeans are fine)

"BLOW WINDS AND CRACK YOUR CHEEKS! RAGE, BLOW,
YOU CATARACTS AND HURRICANOES."



"THOU SHOULDST NOT HAVE BEEN OLD TILL THOU
HADST BEEN WISE."

~ King Lear, Fool to King Lear



SAMUEL & ERASMUS INSTITUTE

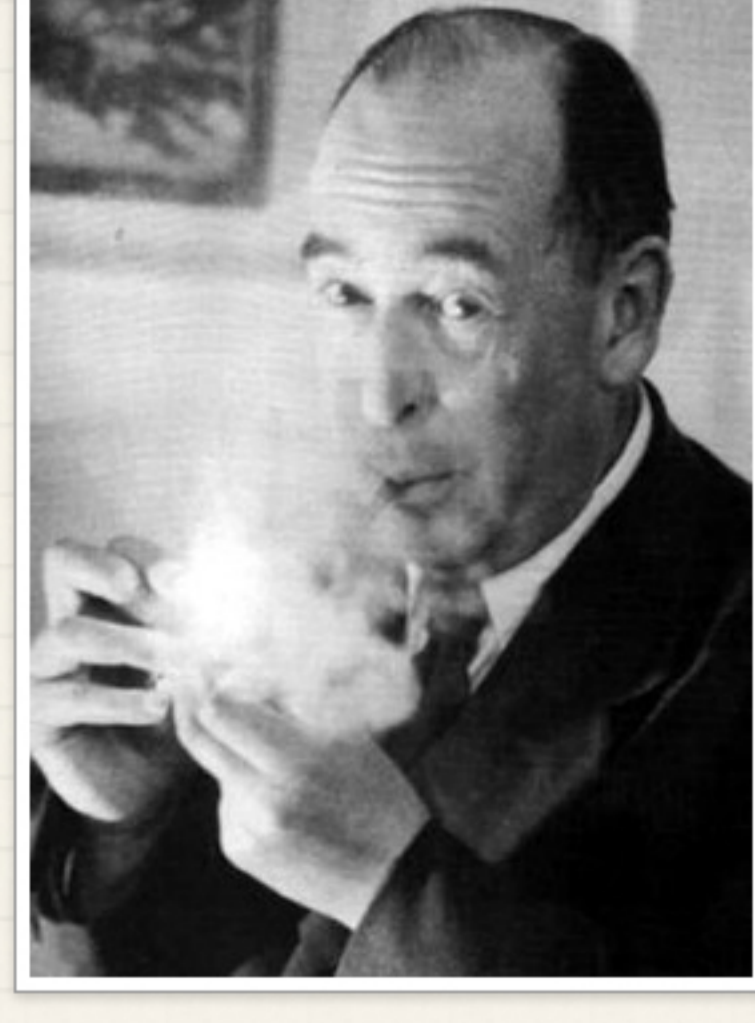
Give light, and the darkness will disappear of itself.

~ Erasmus

[✉ jpresberg@samuelerasmus.org](mailto:jpresberg@samuelerasmus.org) [☎ 832.693.2889](tel:832.693.2889)

[🌐 samuelerasmus.org](http://samuelerasmus.org)

SEi is a federal 501 (c) (3) tax exempt public charity. Donations are tax deductible.



THE LITTLE KNOTS OF FRIENDS WHO TURN THEIR
BACKS ON THE "WORLD" ARE THOSE WHO REALLY
TRANSFORM IT. ~ C.S. LEWIS

<http://amzn.com/0268001030>

amzn.com

<http://amzn.com/0898703034>

amzn.com