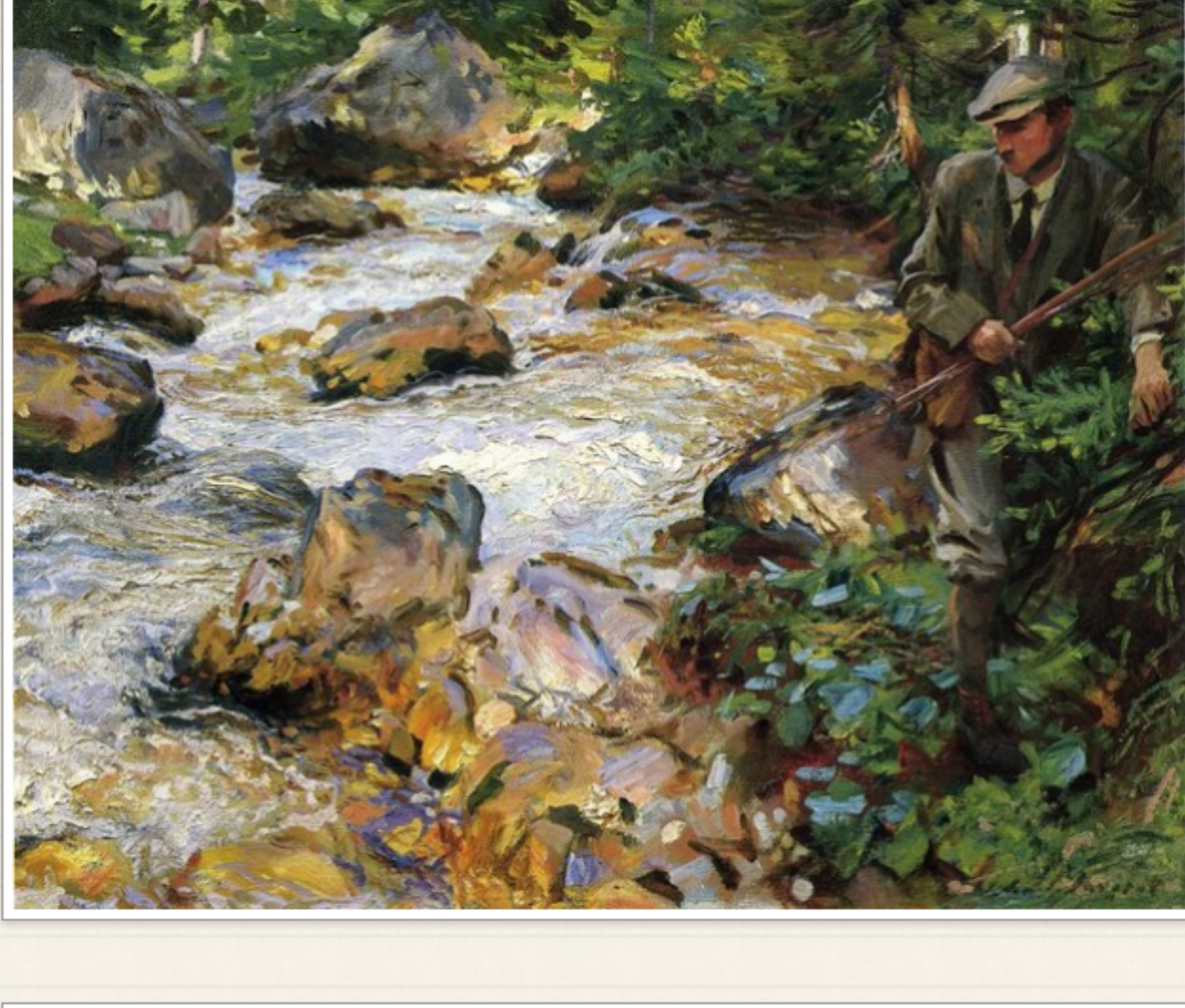


# Tuning Temperance & Being Unleashed

AN EDUCATORS MEETING (D.C.)



Samuel + Erasmus institute  
ideas • conversation • friendship

## A SEI MEETING OF EDUCATORS: WASHINGTON, D.C.

Esteemed Educators, as you know we are ready to begin SEI meetings for this academic year! We shall start Thursday, October 13 at Old Angler's Inn.

We will begin *light* exploration of our overarching topics of study for this academic year--**temperance** and **faith**--in addition to our ongoing pursuit of the teaching art. (Victor Frankl's *Man's Search for Meaning* will also be a source of enquiry later in the year).



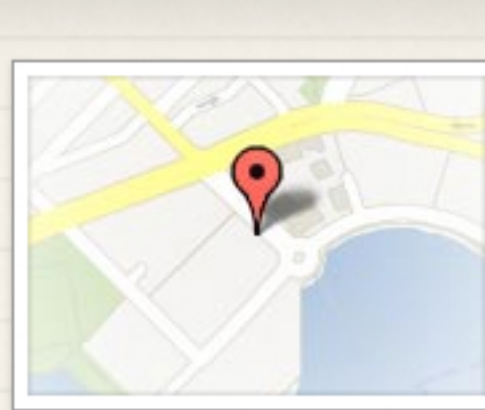
Cheers!

Pat

*Copies of the materials will be provided.*

**Please RSVP--space will be limited**

## TUNING TEMPERANCE & UNLEASHING BEING: A SEI EDUCATORS MEETING (D.C.)



**WHEN**  
THURSDAY, OCT. 13TH, 7:30-9:45PM

**WHERE**  
OLD ANGLER'S INN, 10801 MACARTHUR  
BLVD, POTOMAC, MD 20854



SAM PHILLIPS AND T BONE BURNETT



## TINKERINGS IN TEMPERANCE AND FAITH...

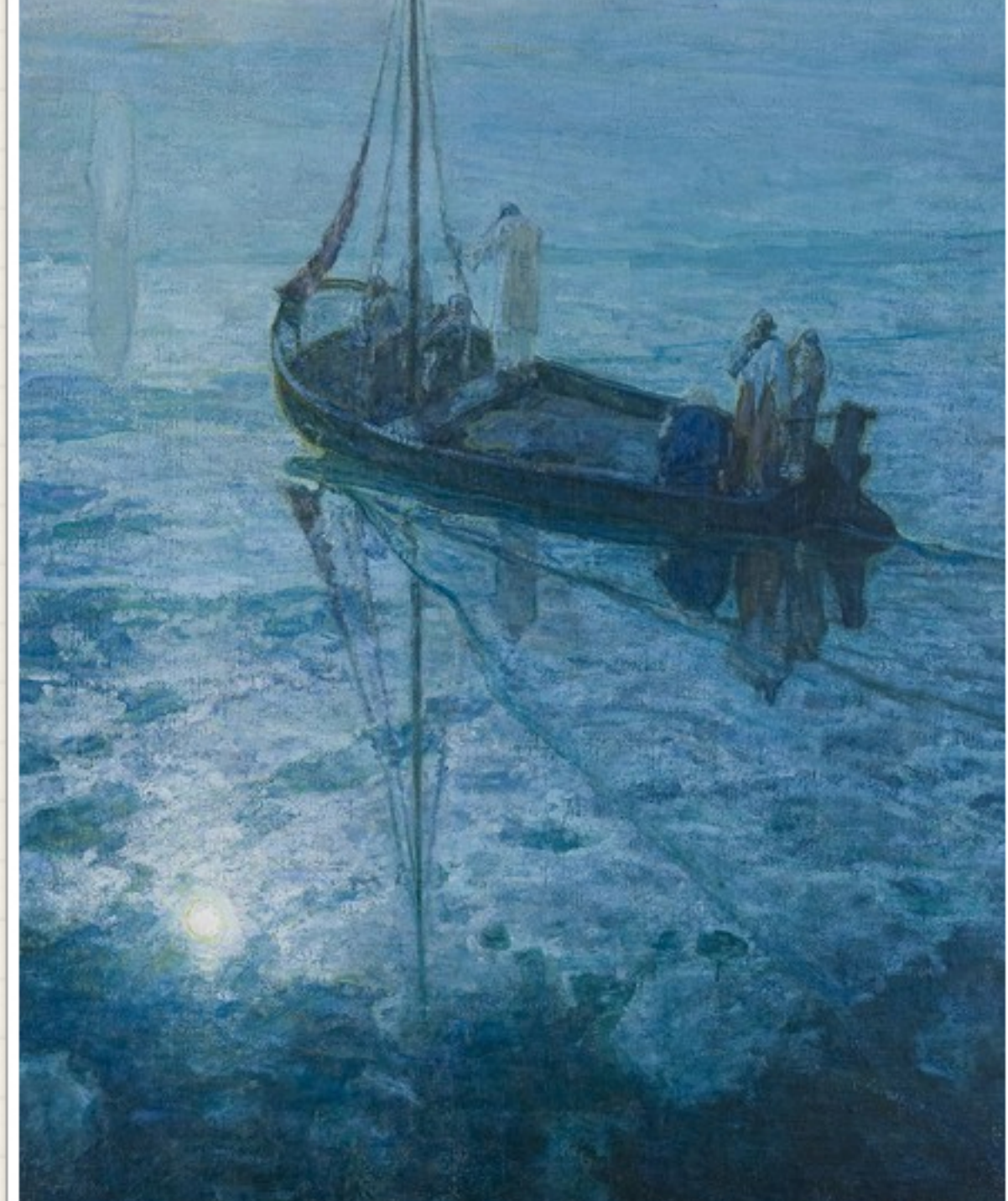
*...without temperantia the stream of the innermost human will-to-be would overflow destructively beyond all bounds, it would lose its direction and never reach the sea of perfection. Yet temperantia is not itself the stream. But it is the shore, the banks,...*

*Unchaste abandon and the self-surrender of the soul to the world of sensuality paralyzes the primordial powers of the moral person: the ability to perceive, in silence, the call of reality, and to make, in the retreat of this silence, the decision appropriate to the concrete situation of concrete action.*

*Cheerfulness of heart is the infallible token that reveals the inner genuineness of discipline as selfless preservation of the self.*

*Is it good for man to believe? Would he be cheating himself of an essential wealth of existence if he were to refuse to believe?*

~ Josef Pieper



Note: Above paintings by H.O. Tanner, *The Disciples See Christ Walking on the Water*, and by J.S. Sargent, *Trout Stream in the Tyrol*



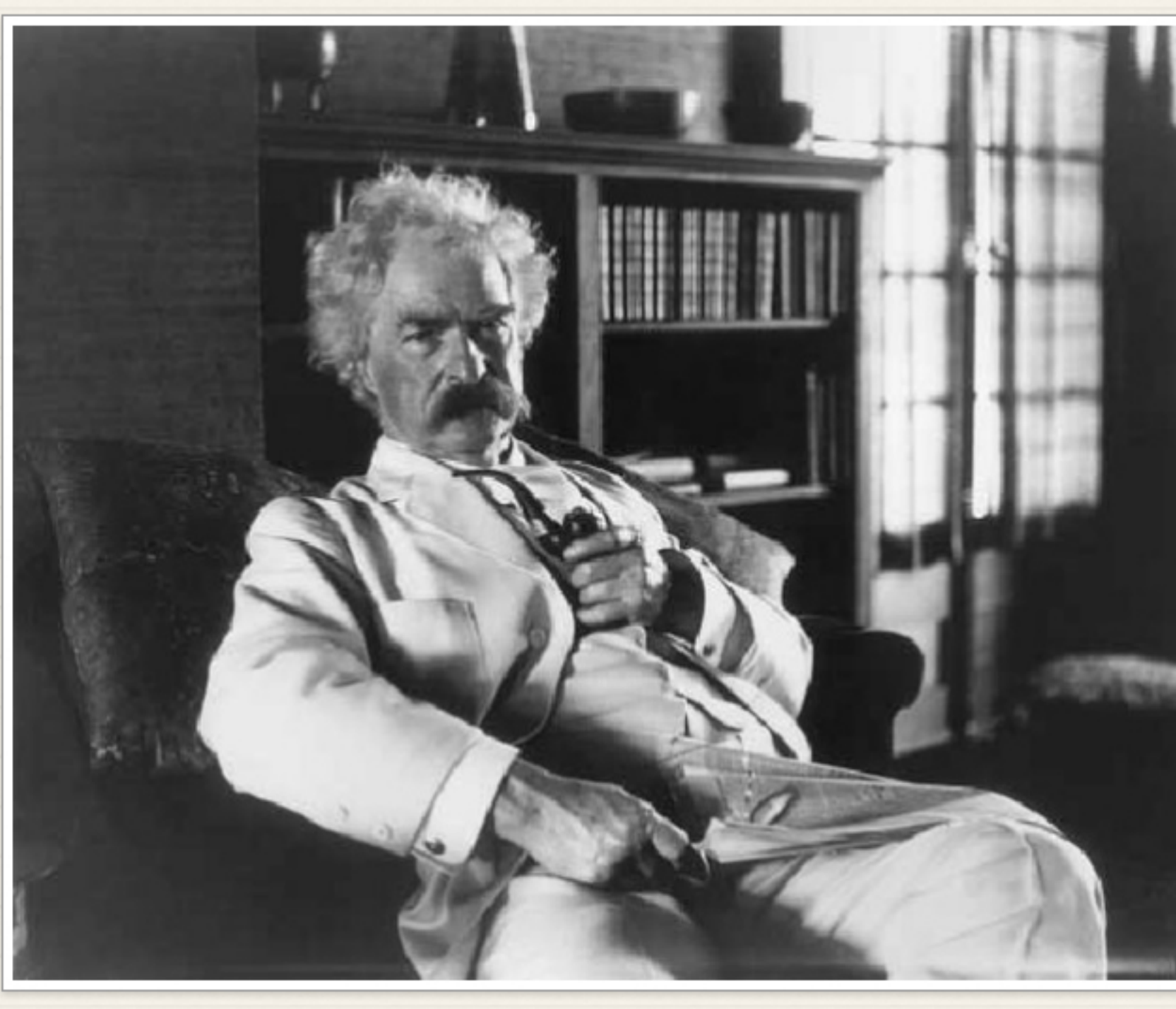
## SAMUEL & ERASMUS INSTITUTE

*Give light, and the darkness will disappear of itself. ~ Erasmus*

✉ [jpresberg@samuelerasmus.org](mailto:jpresberg@samuelerasmus.org) ☎ 832.693.2889

🌐 [samuelerasmus.org](http://samuelerasmus.org)

**SEI is a federal 501 (c) (3) tax exempt public charity. Donations are tax deductible.**



THE WORLD REVEALS ITSELF TO THE SILENT LISTENER  
AND ONLY TO HIM; THE MORE SILENTLY HE LISTENS,  
THE MORE PURELY IS HE ABLE TO PERCEIVE REALITY ~

J. PIEPER

<http://amzn.com/0898703034>

amzn.com

<http://amzn.com/0268001030>

amzn.com