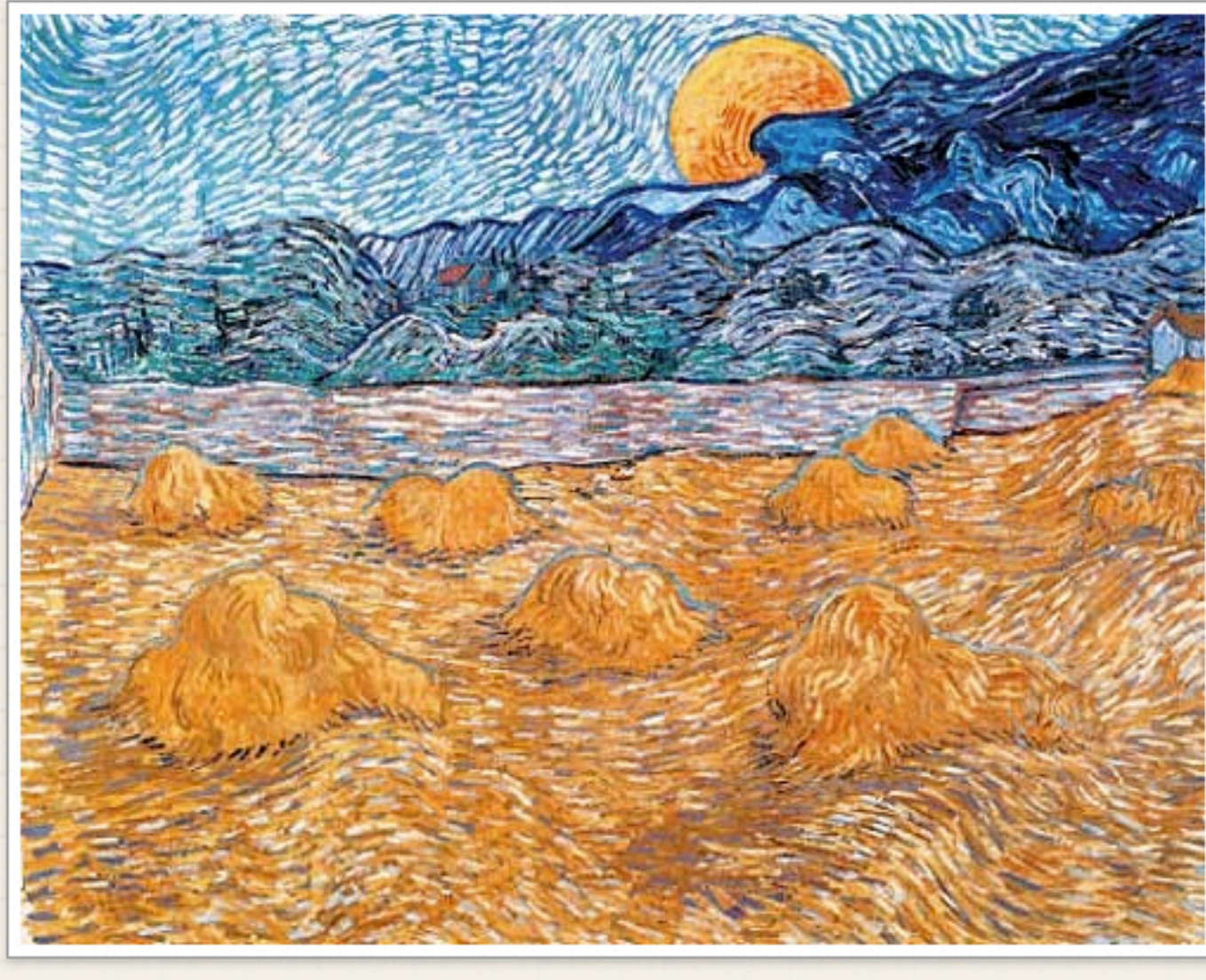


SEi Renaissance Workshop (2)

CONSCIENCE, COURAGE, & A CROSSROADS OF TO BE OR NOT



Evening Landscape With Rising Moon, Van Gogh

SUMMER WORKSHOP FOR COLLEGE & HIGH SCHOOL STUDENTS

We have added an additional SEi Renaissance Workshop for the summer of 2016! This shall feature an engagement with a prince of Denmark...

Join us for a summer workshop designed to hone the essential qualities and dispositions of a Renaissance leader! This unique program will strengthen capacities of good judgment and effective communication, while also fortifying your foundations in wisdom, virtue, and a living Western Tradition!



See schedule below.

Until then!

Mr Presberg

Samuel + Erasmus institute
ideas • conversation • friendship



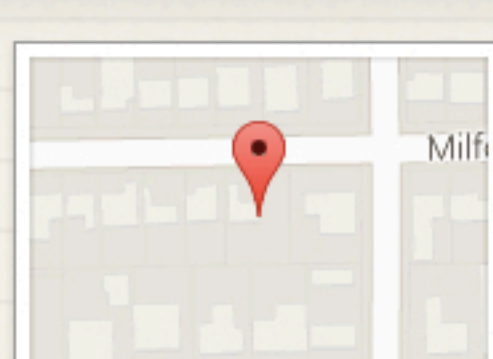
*To be, or not to be? That is the question—
Whether 'tis nobler in the mind to suffer
The slings and arrows of outrageous fortune,
Or to take arms against a sea of troubles,
And, by opposing, end them...?*

~ Hamlet

SEI RENAISSANCE WORKSHOP (ANOTHER)

WHEN
WEDNESDAY, JUNE 8TH, 9:30AM TO
FRIDAY, JUNE 10TH, 9PM

WHERE
1707 MILFORD STREET
HOUSTON, TX



[Get Directions](#)

A PLAN

Schedule: Wednesday/ Thursday

9:15 Arrive, Morning memo and Proverbial Wisdom

9:30 Quick Dip in Scripture

Quick dive into Scripture, with a focus on the personality and teaching ways of Christ and the use of the imagination and common sense in analysis

9:50 Of Virtue & Vice: Wed: Courage #1/ Thur: Conscience #1

Fresh studies of those vital habits and dispositions necessary to *being human* (or not) ~ explored in a way that is interesting and practical...

10:45 break

10:55 Of Virtue & Vice: Wed: Courage #2/ Thur: Conscience #2

11:45 Lunch & Games

(bring a bagged lunch)

1:00 Shakespeare at Play: Wed/ Thur: Hamlet, parts 1 & 2

(in-depth discussion follows each reading)

3:30 Finis

Friday: 3 p.m. ~ 9 p.m., will feature games, final discussions of topics, and a festive sit-down dinner (optional) with performances.

Attire & Things:

- elegant casual
- bring a pen and journal
- bring a bagged lunch for Wed and Thursday



THE PLAY'S THE THING WHEREIN I'LL CATCH THE CONSCIENCE OF THE KING.

~ Hamlet

SEi is a federal 501 (c) (3) tax exempt public charity. Donations are tax deductible.



SAMUEL & ERASMUS INSTITUTE

Give light, and the darkness will disappear of itself.

~ Erasmus

jpresberg@samuelerasmus.org

832.693.2889

samuelerasmus.org



THE LITTLE KNOTS OF FRIENDS WHO TURN THEIR BACKS ON THE "WORLD" ARE THOSE WHO REALLY TRANSFORM IT. ~ C.S. LEWIS