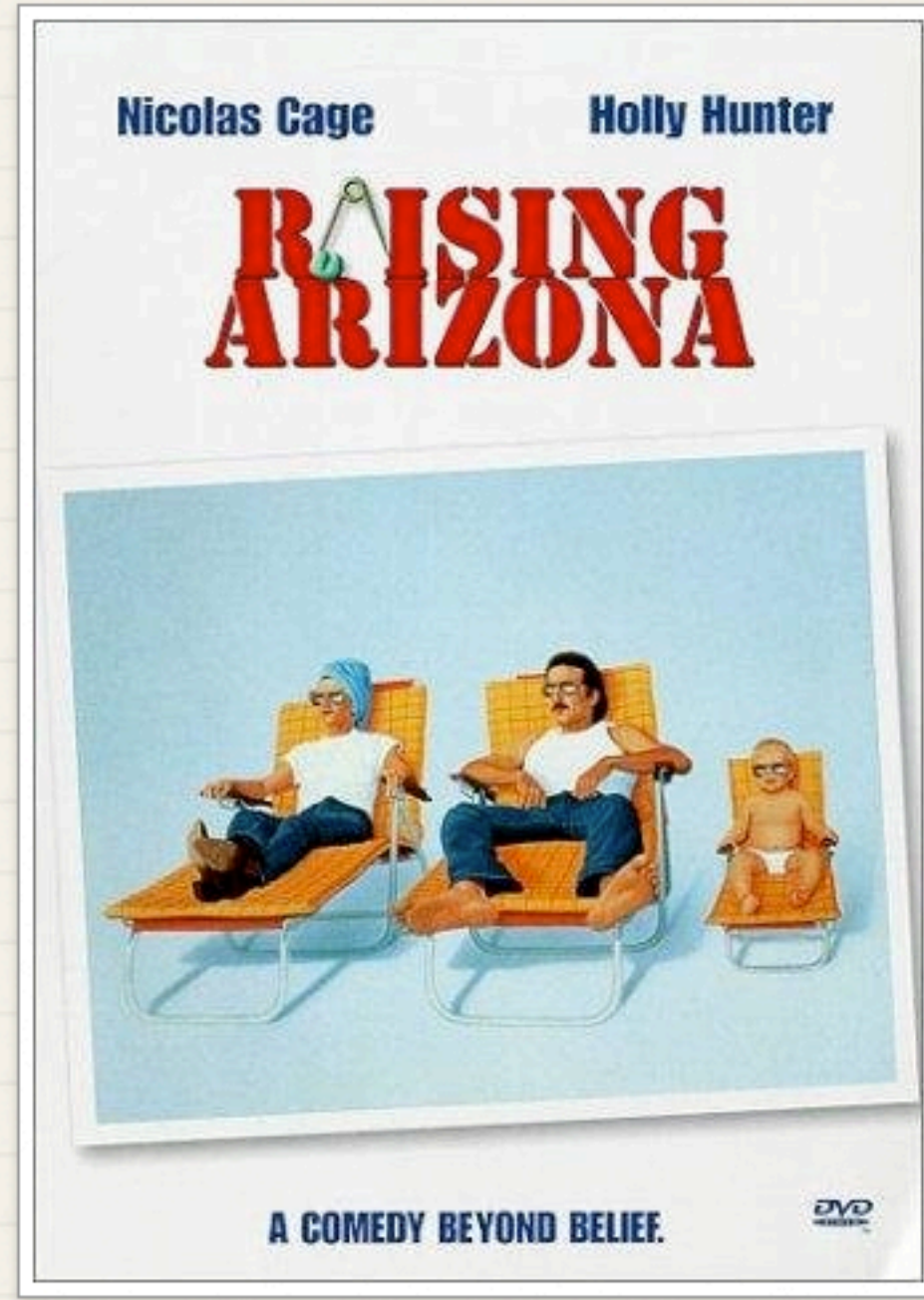


# (Mis)Adventures of Becoming Dad

A MEETING OF THE ERASCIBLE SAM & FOLLY CLUB (HOUSTONIA)



Samuel + Erasmus institute  
ideas • conversation • friendship

## A MARCH MEETING

Highly esteemed gentle folk of the most roughly refined Erascible Sam & Folly Club... (that's you): our next meeting is Friday, March 4!

Bearing in mind some of our recent explorations of prudence, we'll enjoy and discuss a comedic masterpiece by the Coen brothers: *Raising Arizona*. Zany and textured with layers of meaning and insight, the film and discussion will, well, do something...for as they declare it is "a comedy beyond belief."

Warm regards,

Mr Presberg

P.S.

Remember to bring a journal and to rsvp.

Popcorn and like things will be served (but not dinner).

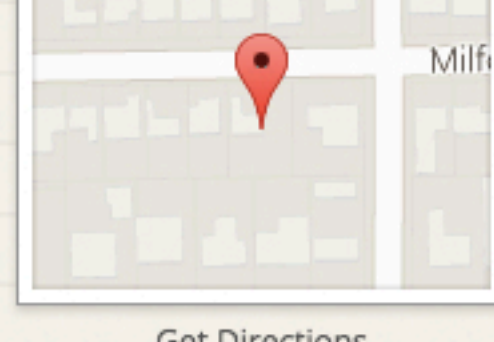
The cost is \$5.



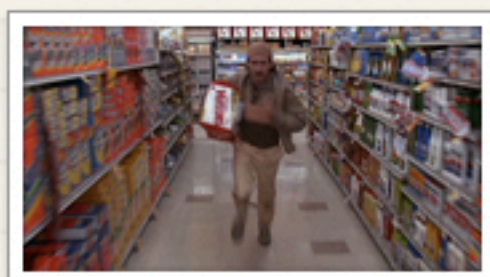
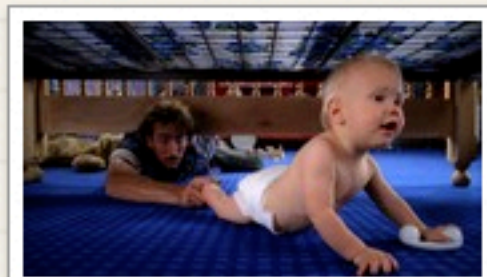
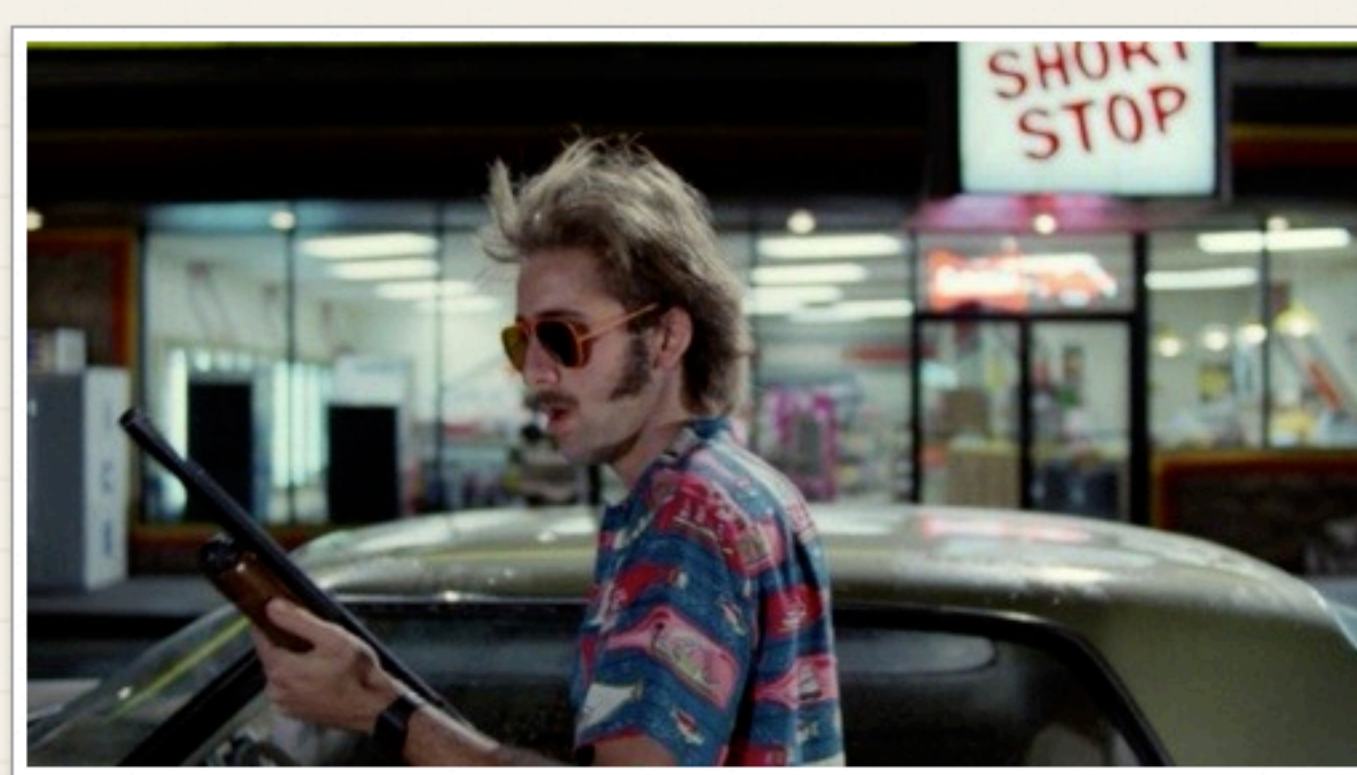
## (MIS)ADVENTURES OF BECOMING DAD: ERASCIBLE SAM & FOLLY CLUB (HOUSTONIA)

WHEN  
FRIDAY, MARCH 4TH, 6:45-9:45PM

WHERE  
1707 MILFORD STREET  
HOUSTON, TX



[Get Directions](#)



## FURTHER PONDERINGS IN PRUDENCE...

*..truth of real things...is contained in the true-to-being memory...it "contains" in itself real things and events as they really are and were. The falsification of recollection by the assent or negation of the will is memory's worst foe...The peril is the greater for its being so imperceptible...There is no more insidious way for error to establish itself than by this falsification of the memory through slight retouches, displacements, discolorations, omissions, shifts of accent...memory can be enured only by a rectitude of the whole human being which purifies the most hidden roots of volition...*

~ Josef Pieper



SAMUEL & ERASMUS INSTITUTE

[jpresberg@samuelerasmus.org](mailto:jpresberg@samuelerasmus.org) 832.693.2889

[samuelerasmus.org](http://samuelerasmus.org)

SEI is a federal 501 (c) (3) tax exempt public charity. Donations are tax deductible.

GIVE LIGHT, AND THE DARKNESS WILL DISAPPEAR OF  
ITSELF. ~ ERASMUS



JOEL AND ETHAN COEN